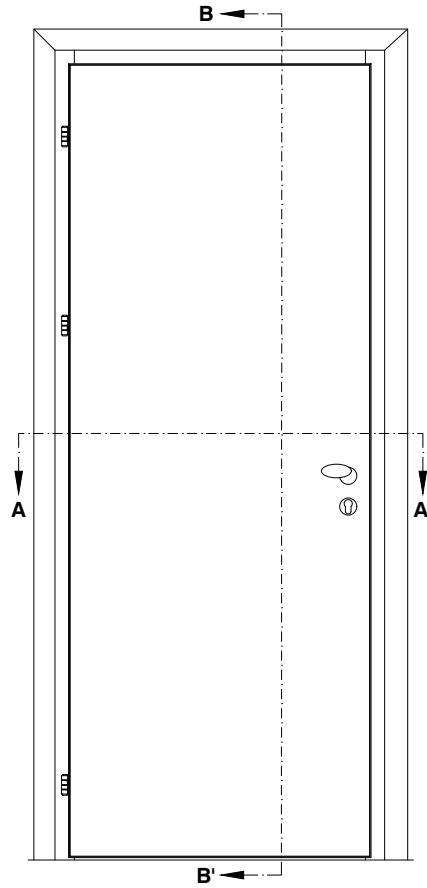
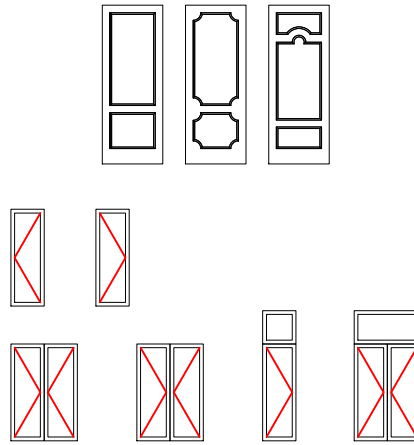


B-B' scala 1:4



VISTA INTERNA scala 1:20



SCHEMI APERTURE PREVISTE

LEGENDA

LEGNO

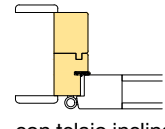
- 1 telaio*
- 2 telaio anta*
- 3 listelli interni*
- 4 pannelli esterni in MDF
- 5 coprifilo

FERRAMENTA

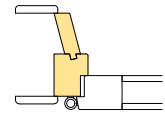
- 6 cerniera anta battente

VARIANTI

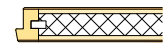
- 1 telaio* larghezza adeguata allo spessore del muro con guarnizione in EPDM



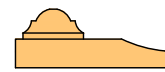
con telaio inclinato



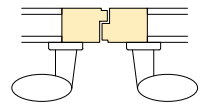
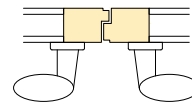
- 2 anta impiallacciata



- 5 coprifilo



- 2A nodo centrale doppia anta



- 7 profilo antipolvere

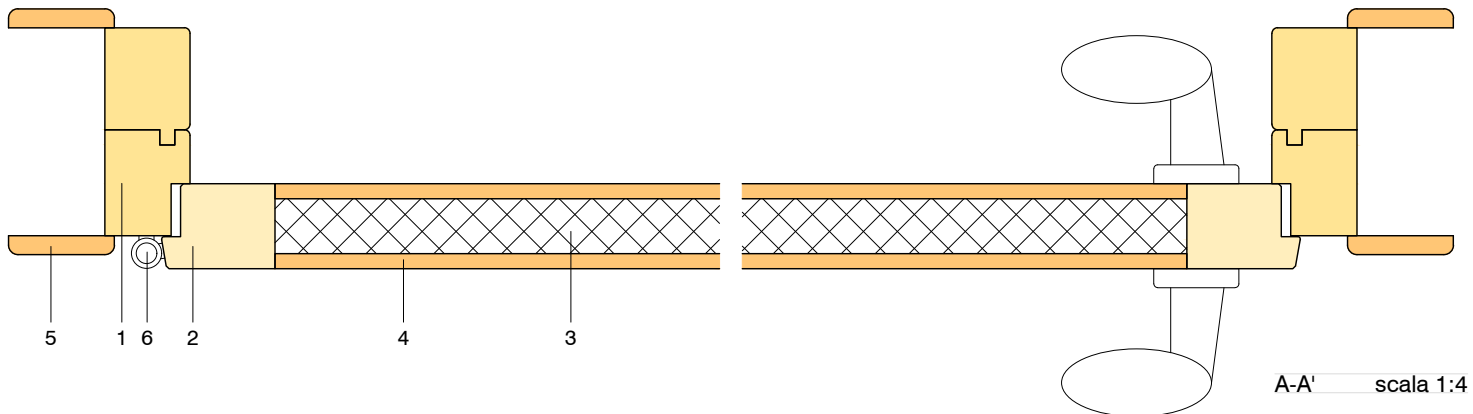


- 6 cerniera a scomparsa



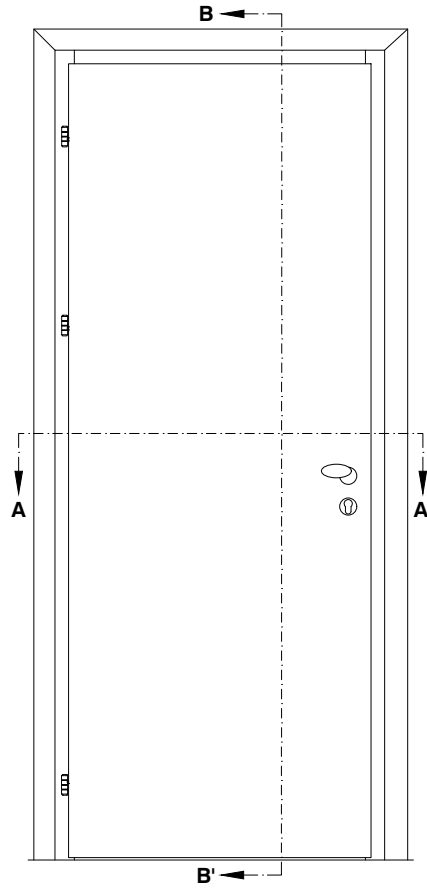
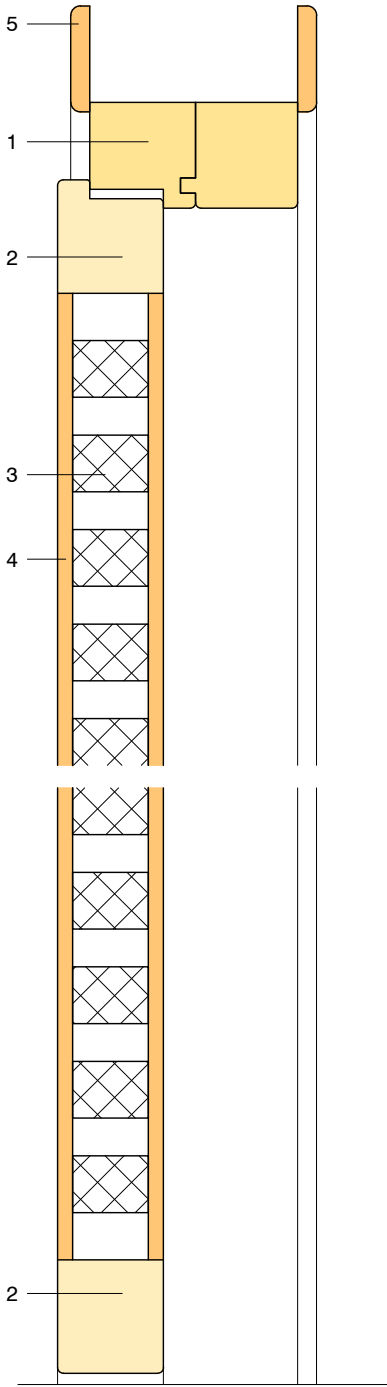
misure in millimetri

* tolleranze (Spessore ±0.3; Larghezza ±1)

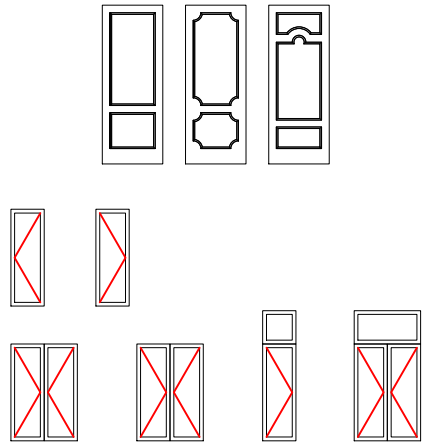


A-A' scala 1:4

CONFORMITA' A NORMA



VISTA INTERNA scala 1:20



SCHEMI APERTURE PREVISTE

LEGENDA

LEGGNO

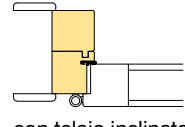
- 1 telaio*
- 2 telaio anta*
- 3 listelli interni*
- 4 pannelli esterni in MDF
- 5 coprifilo

FERRAMENTA

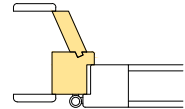
- 6 cerniera anta battente

VARIANTI

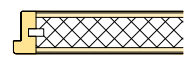
- 1 telaio* larghezza adeguata allo spessore del muro con guarnizione in EPDM



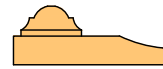
con telaio inclinato



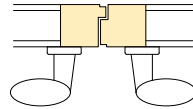
2 anta impiallacciata



5 coprifilo



2A nodo centrale doppia anta



7 profilo antipolvere



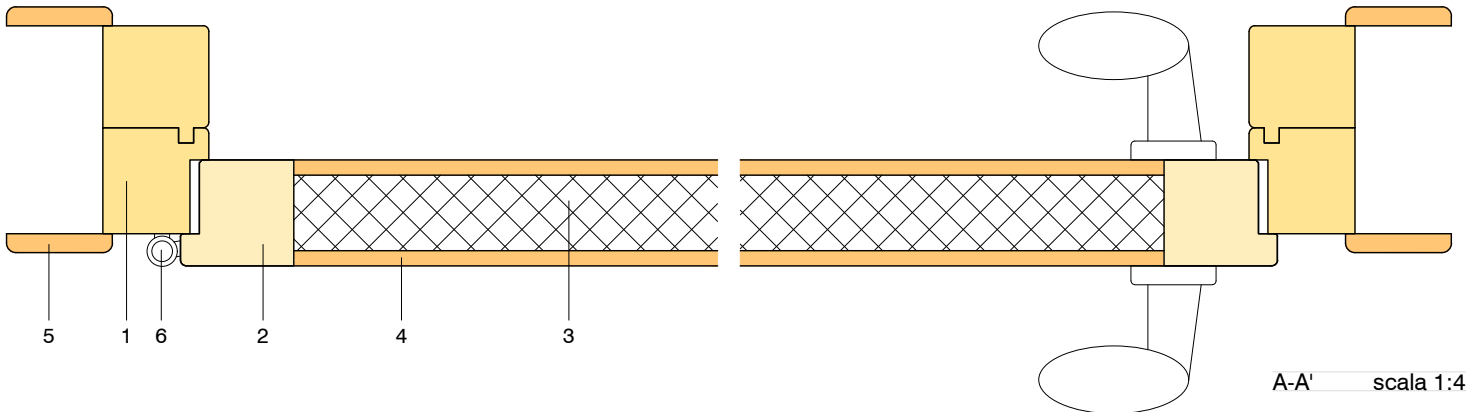
6 cerniera a scomparsa



misure in millimetri

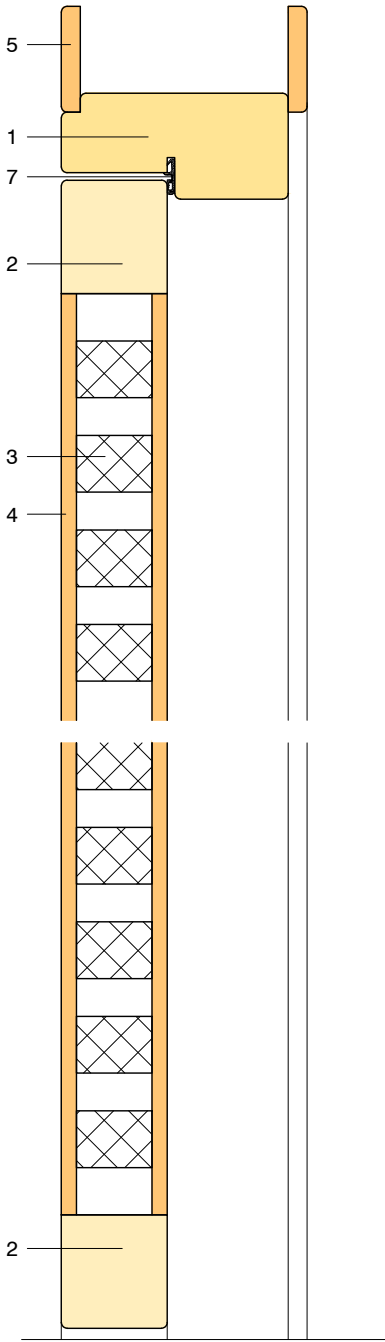
* tolleranze (Spessore ±0.3; Larghezza ±1)

B-B' scala 1:4

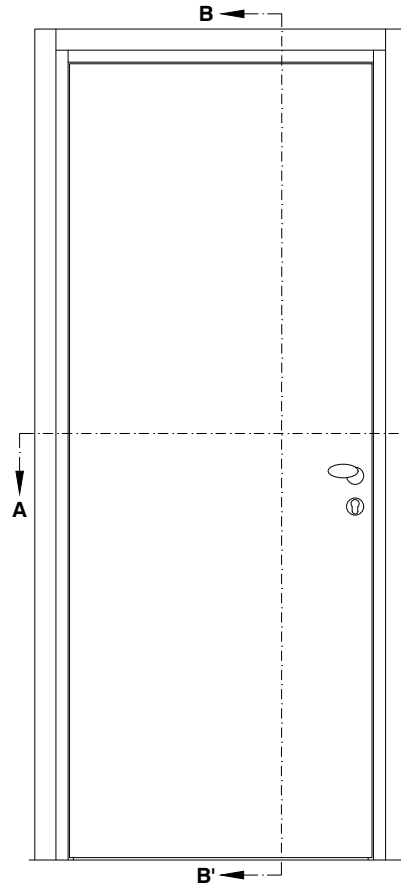


A-A' scala 1:4

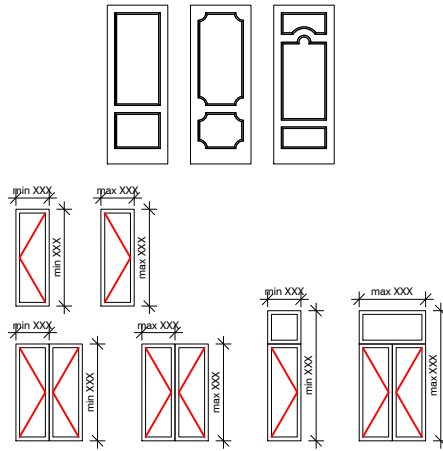
CONFORMITA' A NORMA



B-B' scala 1:4



VISTA INTERNA scala 1:20



SCHEMI APERTURE PREVISTE
Destinazioni d'uso UNI 11173 allegato n.xx

LEGENDA

- LEGNO** specie legnosa densità \geq xxxx
- 1 telaio* 56 x 110
 - 2 telaio anta* 56 x 60
 - 3 listelli interni* 40 x 30
 - 4 pannelli esterni in MDF sp = 8
 - 5 coprifilo 56 x 10

GUARNIZIONI

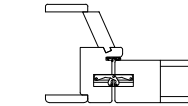
- 7 in EPDM

FERRAMENTA

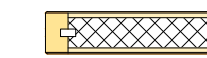
- 6 cerniera a scomparsa

VARIANTI

- 1 telaio* larghezza adeguata allo spessore del muro con telaio inclinato



- 2 anta impiallacciata



- 5 coprifilo



56 x 15

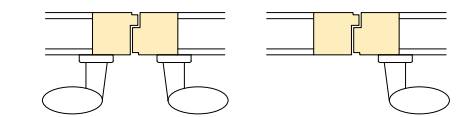


100 x 25

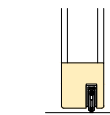


100 x 39

- 2A nodo centrale doppia anta

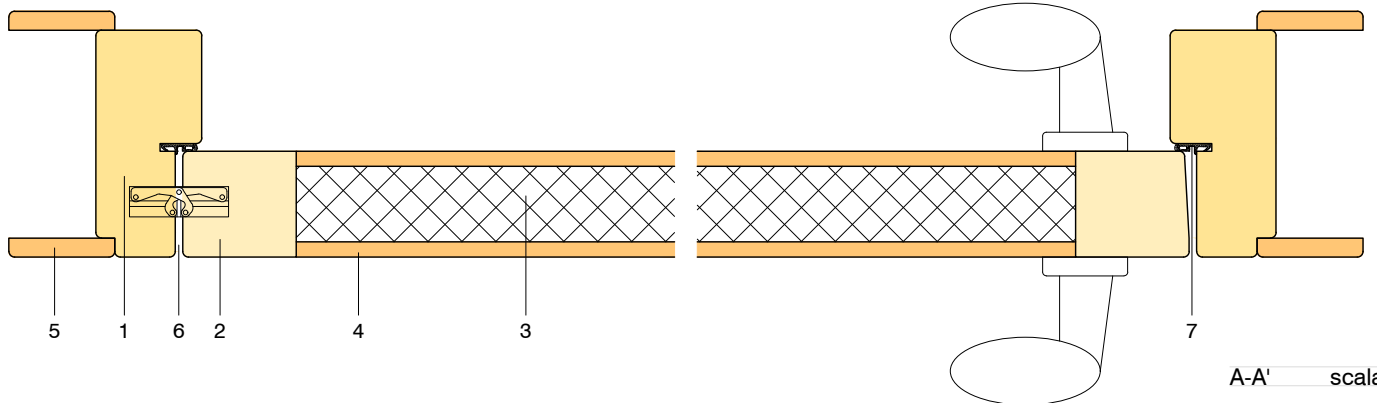


- 7 profilo antipolvere



misure in millimetri

* tolleranze (Spessore ± 0.3 ; Larghezza ± 1)



A-A' scala 1:4

CONFORMITA' A NORMA